

# TOKYO 8 HANDLING INSTRUCTIONS

1. Till and spread compost.



2. Plant the seeds.



3. Spray Tokyo 8 (monthly)



4. Apply additional fertilizer

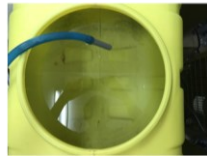


5. Harvest



## TOKYO 8 DILUTION GUIDELINES

For one time:  
1L of Tokyo8 for 1000m2.  
10L for 1 hectare



Spray on the whole  
plant and soil



5 to 10 times until harvest

*Depends on the crop*

Equipment



Power sprayer



Power sprayer



500L tank

Tokyo 8



Mix Tokyo 8 with water  
**Dilute 50 to 500 times** depending on  
the spraying method that you use